

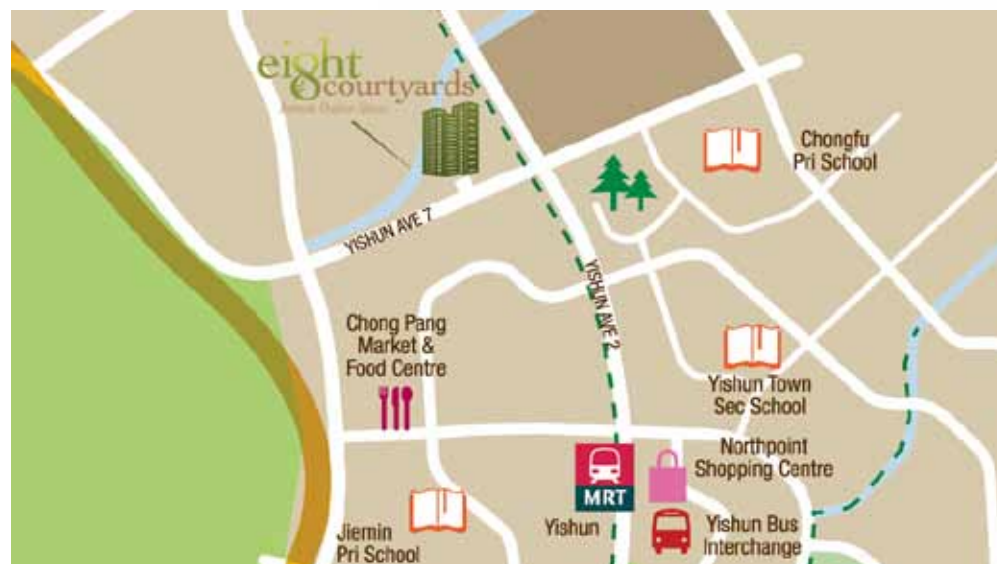
eight
O courtyards

Intimate Outdoor Spaces

TOWER H1
18 CANBERRA DRIVE

FLR \ UNIT	37	38	39	40
15	C10 #15-37 (107 sqm/ 1152 sqft)	C7 #15-38 (101 sqm/ 1087 sqft)		C8 #15-40 (106 sqm/ 1141 sqft)
14	C10 #14-37 (107 sqm/ 1152 sqft)	C7 #14-38 (101 sqm/ 1087 sqft)	C1 #14-39 (89 sqm/ 958 sqft)	C8 #14-40 (106 sqm/ 1141 sqft)
13	C10 #13-37 (107 sqm/ 1152 sqft)	C7 #13-38 (101 sqm/ 1087 sqft)	C1 #13-39 (89 sqm/ 958 sqft)	C8 #13-40 (106 sqm/ 1141 sqft)
12	C10 #12-37 (107 sqm/ 1152 sqft)	C7 #12-38 (101 sqm/ 1087 sqft)	C1 #12-39 (89 sqm/ 958 sqft)	C8 #12-40 (106 sqm/ 1141 sqft)
11	C10 #11-37 (107 sqm/ 1152 sqft)	C7 #11-38 (101 sqm/ 1087 sqft)	C1 #11-39 (89 sqm/ 958 sqft)	C8 #11-40 (106 sqm/ 1141 sqft)
10	C10 #10-37 (107 sqm/ 1152 sqft)	C7 #10-38 (101 sqm/ 1087 sqft)	C1 #10-39 (89 sqm/ 958 sqft)	C8 #10-40 (106 sqm/ 1141 sqft)
9	C10 #09-37 (107 sqm/ 1152 sqft)	C7 #09-38 (101 sqm/ 1087 sqft)	C1 #09-39 (89 sqm/ 958 sqft)	C8 #09-40 (106 sqm/ 1141 sqft)
8	C10 #08-37 (107 sqm/ 1152 sqft)	C7 #08-38 (101 sqm/ 1087 sqft)	C1 #08-39 (89 sqm/ 958 sqft)	C8 #08-40 (106 sqm/ 1141 sqft)
7	C10 #07-37 (107 sqm/ 1152 sqft)	C7 #07-38 (101 sqm/ 1087 sqft)	C1 #07-39 (89 sqm/ 958 sqft)	C8 #07-40 (106 sqm/ 1141 sqft)
6	C10 #06-37 (107 sqm/ 1152 sqft)	C7 #06-38 (101 sqm/ 1087 sqft)	C1 #06-39 (89 sqm/ 958 sqft)	C8 #06-40 (106 sqm/ 1141 sqft)
5	C10 #05-37 (107 sqm/ 1152 sqft)	C7 #05-38 (101 sqm/ 1087 sqft)	C1 #05-39 (89 sqm/ 958 sqft)	C8 #05-40 (106 sqm/ 1141 sqft)
4	C10 #04-37 (107 sqm/ 1152 sqft)	C7 #04-38 (101 sqm/ 1087 sqft)	C1 #04-39 (89 sqm/ 958 sqft)	C8 #04-40 (106 sqm/ 1141 sqft)
3	C10 #03-37 (107 sqm/ 1152 sqft)	C7 #03-38 (101 sqm/ 1087 sqft)	C1 #03-39 (89 sqm/ 958 sqft)	C8 #03-40 (106 sqm/ 1141 sqft)
2	C10 #02-37 (107 sqm/ 1152 sqft)	C7 #02-38 (101 sqm/ 1087 sqft)	C1 #02-39 (89 sqm/ 958 sqft)	C8 #02-40 (106 sqm/ 1141 sqft)
1	C10P #01-37 (125 sqm/ 1346 sqft)	C7P-1 #01-38 (127 sqm/ 1367 sqft)	C1P #01-39 (106 sqm/ 1141 sqft)	C8P #01-40 (126 sqm/ 1356 sqft)

- 3 Bedroom Compact
- 3 Bedroom + Utility



When nature's tranquility meets cosmopolitan comforts, it's a dream come true.

What's Around You.

Thematic Courtyards

1. Vigour Courtyard
2. Serenity Courtyard
3. Discovery Courtyard
4. Inspiration Courtyard
5. Play Courtyard
6. Spa Courtyard
7. Wellness Courtyard
8. Harmony Courtyard

Central Court

- A. Forecourt Plaza
- B. Clubhouse
- C. Promenade
- D. Palm Oasis
- E. Spa Dining Pavilion
- F. Hydro-vitality Gym
- G. Gym
- H. 50m Lap Pool
- I. Splash Cove

Leisure & Entertainment

- J. Children's Playground
- K. BBQ Pavilion
- L. Rainforest Fitness Trail
- M. Merry Treehouse
- N. Multi-purpose Court
- O. Kid's Corner
- P. Tennis Court
- Q. Bliss Spa Pavilion
- R. Rest Pavilion

Thematic Gardens

- S. Zen Garden
- T. Mediterranean Grove
- U. Tropical Paradise

Others

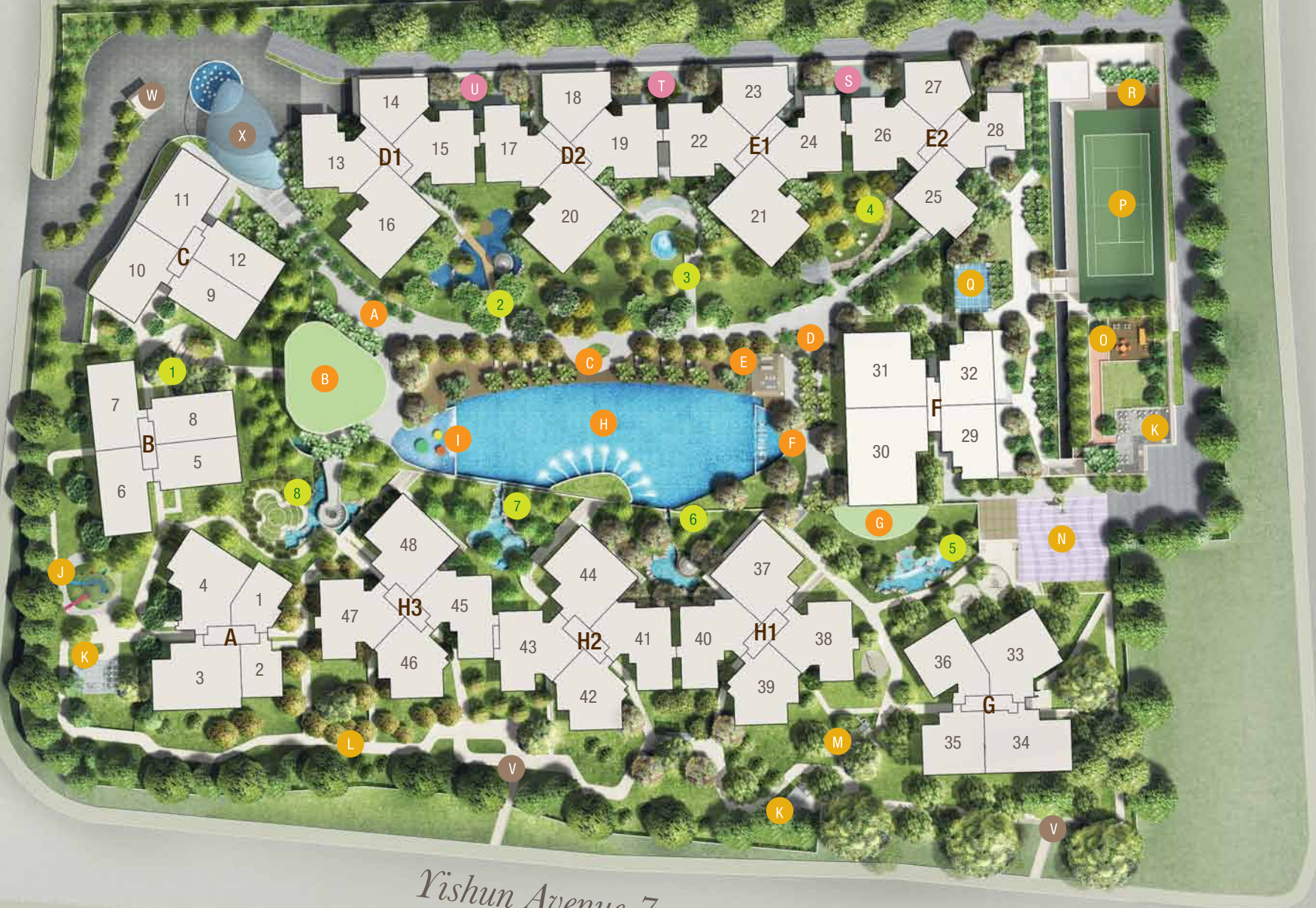
- V. Side Gate
- W. Guardhouse
- X. Drop-off Porch

eight
courtyards
Intimate Outdoor Spaces

Canberra Drive

Yishun Avenue 2

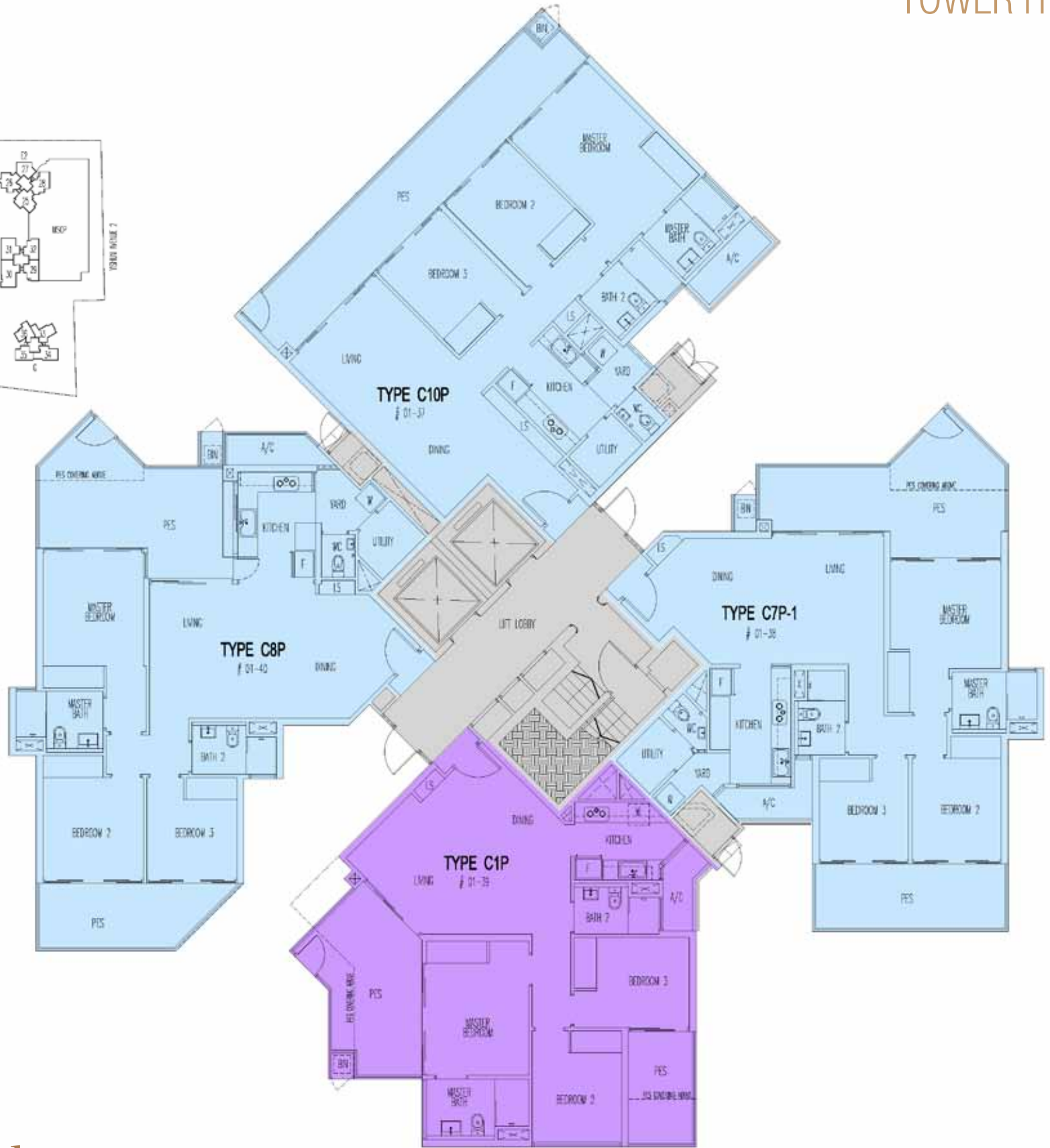
Yishun Avenue 7





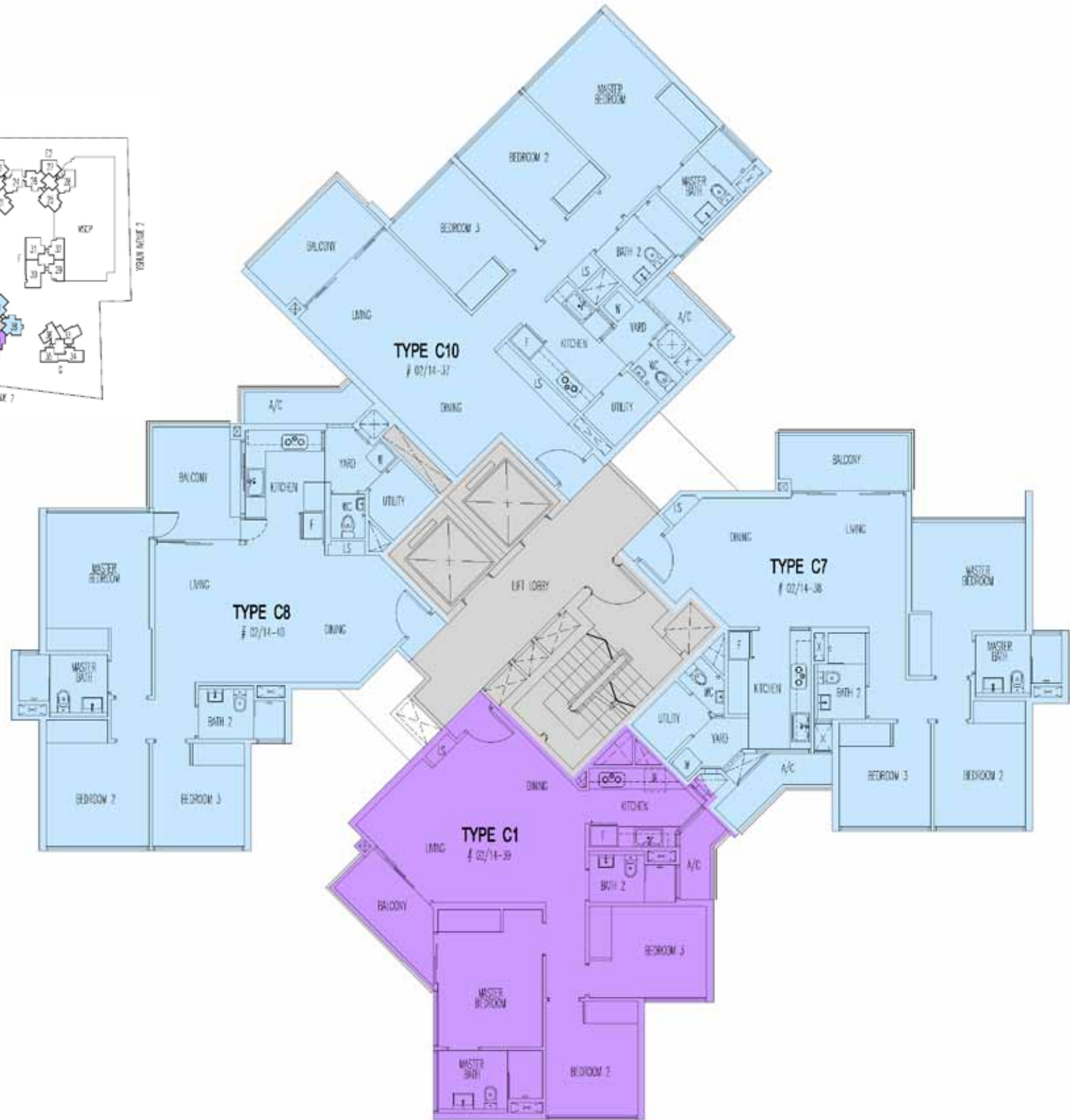
1ST STOREY PLAN

TOWER H1



2ND - 14TH STOREY PLAN

TOWER H1



15TH STOREY PLAN

TOWER H1



Developer : Yishun Gold Pte Ltd (Company UEN No. 201016945R)
Lot No. : Lot 3149K Mukim 19
Tenure : Leasehold estate of 99 years commencing from 20th September 2010
Developer's License No. : C0748
Building Plan No. : A1987-00081-2010-BP01 dated 4th April 2011
Expected Date of TOP : 30th September 2015
Expected Date of Legal Completion : 30th September 2018

While every reasonable care has been taken in preparing this brochure and in constructing the models and showflats, the Developer and the Marketing Agent(s) cannot be held responsible for any inaccuracies or omissions. Visual representations, models, showflat displays and illustrations, photographs, art renderings and other graphic representations and references are intended to portray only artistic impressions of the development and cannot be regarded as representations of fact. Floor areas are approximate measurements and are subject to final survey. The property is subject to final inspection by the relevant authorities to comply with the current codes of practice.

All information, specifications, rendering, visual representations and plans are current at the time of publication and are subject to change as may be required by us and/or the competent authorities, and shall not form part of any offer or contract nor constitute any warranty by us and shall not be regarded as statements or representations of fact. All plans are subject to amendments as directed and/or approved by the building authorities. All areas are approximate measurements only and subject to final survey. The Sale and Purchase Agreement shall form the entire agreement between us as the Developer and the Purchaser, and shall supersede all statements, representations or promises made prior to the signing of Sale and Purchase Agreement and shall in no way be modified by any statements, representations of promises made by us or the Marketing Agent (s).

Jointly Developed By:



Far East Organization
INSPIRING BETTER LIVES

Call 6481 8802 6273 2122
www.8courtyards.com